

ABN 27 117 521 598

The Direct Connection

Mark Heffernan Qld Pty Ltd

The Australian distributor of
Low pressure fittings Unilock series



Collection

2014

MS
HYDRAULICS
Stainless Steel Fittings

INDICE
INDEX

Pag. 10.01

ISTRUZIONI DI MONTAGGIO
ASSEMBLY INSTRUCTIONS

Pag. 10.02



FEMMINA GIR. GAS CONO 60° UNILOCK
BSP SWIVEL FEM. 60° CONE UNILOCK

Cod. BSPSF..UNI

Pag. 10.03



FEMM. GIR.90°GAS CONO 60° UNILOCK
90° BSP SWIVEL FEM.60°CONE UNILOCK

Cod. 90BSPSF..UNI

Pag. 10.03



FEMM.GIR. 24° SERIE LEGG. UNILOCK
METR.SWIVEL FEM. 24°CONE UNILOCK

Cod. ORMSFL..UNI

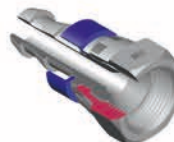
Pag. 10.04



MASCHIO METR.24° SER.LEG.UNILOCK
METRIC MALE 24°CONE UNILOCK

Cod. MML..UNI

Pag. 10.04



FEMM.GIR.JIC SV.74° UNILOCK
JIC SWIVEL FEMALE 74° CONE UNILOCK

Cod. JSF..UNI

Pag. 10.05



MASCHIO JIC CONO 74° UNILOCK
JIC MALE 74° CONE UNILOCK

Cod. JM..UNI

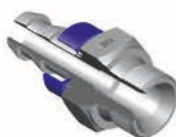
Pag. 10.05



FEMM.METR.TUB.SER.LEGG.UNILOCK
METRIC STAND. LIGHT TYPE UNILOCK

Cod. SL..UNI

Pag. 10.06



MASCHIO GAS SV.60° UNILOCK
BSP MALE 60° CONE UNILOCK

Cod. BSPM..UNI

Pag. 10.06



MASCHIO SV.60° - NPT UNILOCK
MALE 60° CONE - NPT UNILOCK

Cod. NPTM..UNI

Pag. 10.07



MASCHIO SV.60° GAS-CON. UNILOCK
MALE 60°CONE BSP-TAPER UNILOCK

Cod. BSPTM..UNI

Pag. 10.07



TUBO CONSIGLIATO SU RACCORDI
UNILOCK
RECOMMENDED HOSE FOR UNILOCK
FITTINGS

Cod. TFS0006..

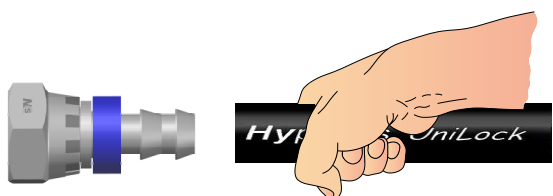
Pag. 10.08

- ISTRUZIONI DI MONTAGGIO - - ASSEMBLY INSTRUCTIONS -

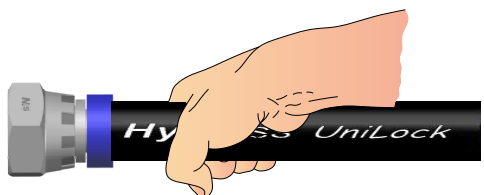


1. Tagliare il tubo a 90° alla lunghezza desiderata usando un taglierino.

1. Cut the hose squarely to desired length, using a cutter.



2. Appoggiare su di una superficie piana l'estremità del raccordo e, impugnando il tubo a circa due centimetri dall'estremità spingere fino a coprire con il collarino di plastica blu tutta l'estremità del tubo.



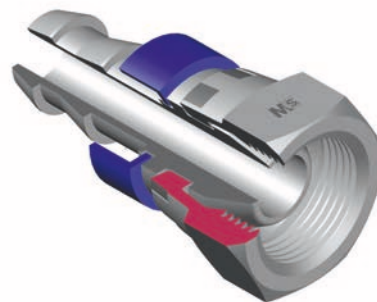
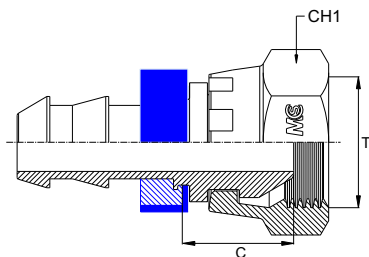
2. Place the fitting end on a flat surface, hold the hose at about 2 cm from its extremity and push it until the hose end will be fully covered by the blue plastic ring.

3. N.B. I raccordi Unilock possono essere utilizzati solo dopo l'inserimento completo del tubo fino al collarino di plastica blu.

3. Warning: unilock fittings can only be used if the hose has been fully inserted up to the blue ring.

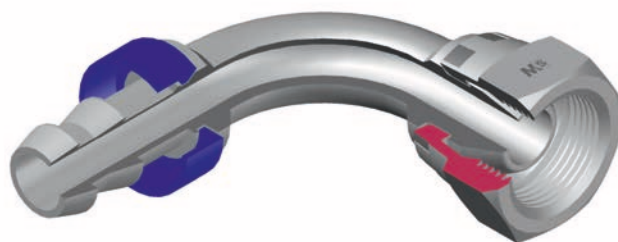
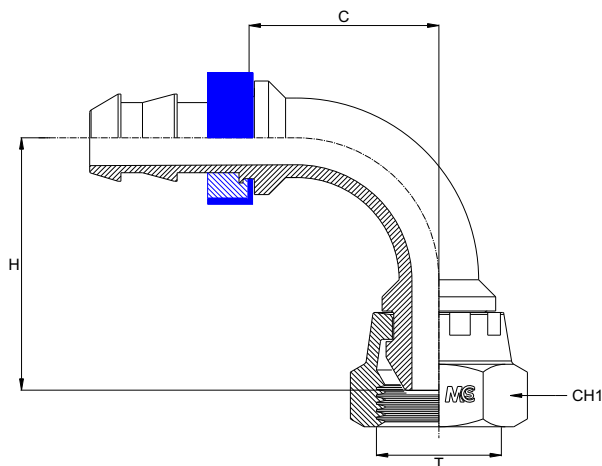


FEMMINA GIREVOLE GAS CONO 60° - *Unilock*
BSP SWIVEL FEMALE 60° CONE - *Unilock*
- DKR -



Bar W.P.	Codice Part Number	Filetto Thread	Ø Int. Tubo Inch. Hose I.D.	C Cut - Off	CH1
18	BSPSF0404 <i>Uni</i>	1/4"	1/4"	15,5	19
	BSPSF0606 <i>Uni</i>	3/8"	3/8"	15,5	22
15	BSPSF0808 <i>Uni</i>	1/2"	1/2"	19,0	27
	BSPSF1212 <i>Uni</i>	3/4"	3/4"	20,5	32
12	BSPSF1616 <i>Uni</i>	1"	1"	21,5	38

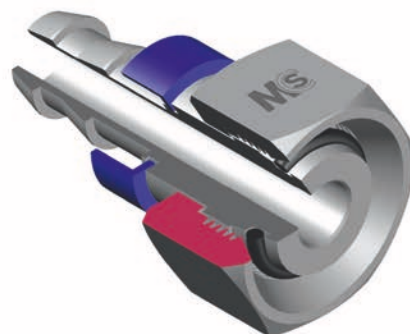
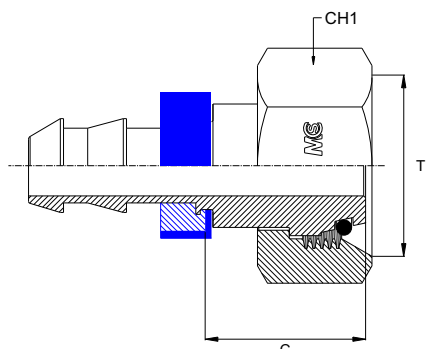
FEMMINA GIREVOLE A 90° GAS CONO 60° - *Unilock*
90° BSP SWIVEL FEMALE 60° CONE - *Unilock*
- DKR 90° -



Bar W.P.	Codice Part Number	Filetto Thread	Ø Int. Tubo Inch. Hose I.D.	C Cut - Off	H Drop	CH1
18	90BSPSF0404 <i>Uni</i>	1/4"	1/4"	22,0	27,5	19
	90BSPSF0606 <i>Uni</i>	3/8"	3/8"	31,0	36,5	22
15	90BSPSF0808 <i>Uni</i>	1/2"	1/2"	33,5	44,5	27
	90BSPSF1212 <i>Uni</i>	3/4"	3/4"	48,0	59,0	32
12	90BSPSF1616 <i>Uni</i>	1"	1"	62,0	74,5	38

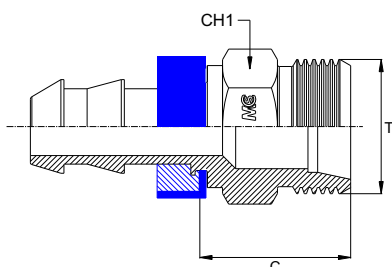
* Per misure non presenti si prega di contattare il nostro ufficio commerciale.
 * Other sizes available on request.

FEMMINA GIR. O'RING FIL. METRICO CONO 24° - SERIE LEGGERA - *Unilock*
O'RING METRIC SWIVEL FEMALE 24° CONE - LIGHT TYPE - *Unilock*
- DKOL -



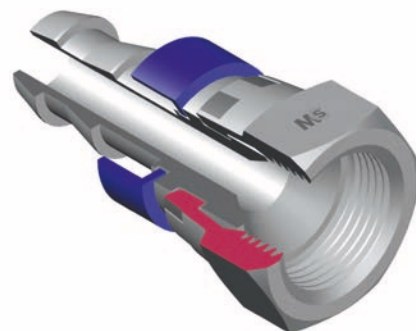
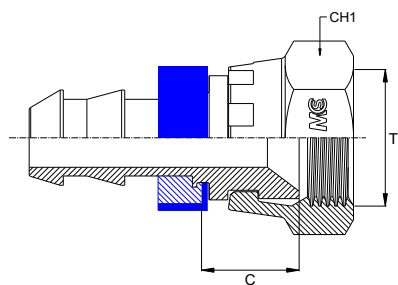
Bar W.P.	Codice Part Number	Filetto Thread	Ø Int. Tubo Inch. Hose I.D.	DIN 24°	C Cut - Off	CH1
18	ORMSFL0604 <i>Uni</i>	12x1,5	1/4"	06L	20,5	14
	ORMSFL0804 <i>Uni</i>	14x1,5	1/4"	08L	21,5	17
	ORMSFL1004 <i>Uni</i>	16x1,5	1/4"	10L	24,5	19
	ORMSFL1006 <i>Uni</i>	16x1,5	3/8"	10L	22,5	19
	ORMSFL1206 <i>Uni</i>	18x1,5	3/8"	12L	22,5	22
15	ORMSFL1508 <i>Uni</i>	22x1,5	1/2"	15L	23,0	27
	ORMSFL1808 <i>Uni</i>	26x1,5	1/2"	18L	28,0	32
	ORMSFL2212 <i>Uni</i>	30x2	3/4"	22L	31,5	36
12	ORMSFL2816 <i>Uni</i>	36x2	1"	28L	31,5	41

MASCHIO METRICO SVASATO 24° - SERIE LEGGERA - *Unilock*
METRIC MALE 24° CONE - LIGHT TYPE - *Unilock*
- CEL -



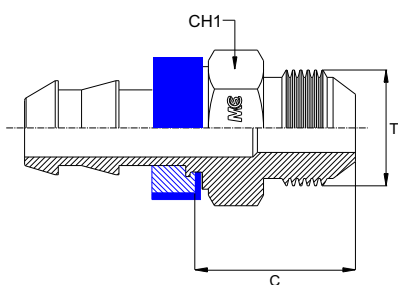
Bar W.P.	Codice Part Number	Filetto Thread	Ø Int. Tubo Inch. Hose I.D.	DIN 24°	C Cut - Off	CH1
18	MML0604 <i>Uni</i>	12x1,5	1/4"	06L	23,5	14
	MML0804 <i>Uni</i>	14x1,5	1/4"	08L	23,5	14
	MML1004 <i>Uni</i>	16x1,5	1/4"	10L	25,5	17
	MML1006 <i>Uni</i>	16x1,5	3/8"	10L	23,5	17
	MML1206 <i>Uni</i>	18x1,5	3/8"	12L	23,5	19
15	MML1508 <i>Uni</i>	22x1,5	1/2"	15L	24,5	22
	MML1808 <i>Uni</i>	26x1,5	1/2"	18L	27,0	27
	MML2212 <i>Uni</i>	30x2	3/4"	22L	28,0	30
12	MML2816 <i>Uni</i>	36x2	1"	28L	30,0	36

FEMMINA GIREVOLE JIC SVASATA 74° - *Unilock*
JIC SWIVEL FEMALE 74° CONE - *Unilock*
- DKJ -



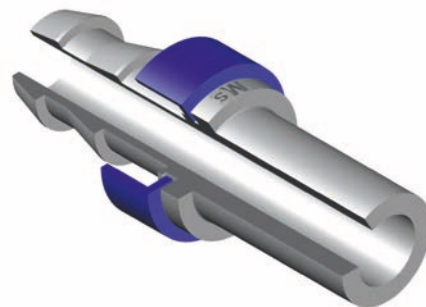
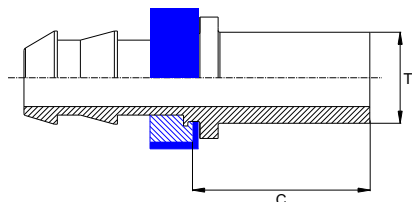
Bar W.P.	Codice Part Number	Filetto Thread	Ø Int. Tubo Inch. Hose I.D.	C Cut - Off	CH1
18	JSF0704Uni	7/16"	1/4"	14,0	17
	JSF0804Uni	1/2"	1/4"	14,0	17
	JSF0906Uni	9/16"	3/8"	12,0	19
	JSF1206Uni	3/4"	3/8"	15,5	24
15	JSF1208Uni	3/4"	1/2"	15,5	24
	JSF1712Uni	1" 1/16	3/4"	18,5	32
12	JSF2116Uni	1" 5/16	1"	19,0	38

MASCHIO JIC CONO 74° - *Unilock*
JIC MALE 74° CONE - *Unilock*
- AGJ -



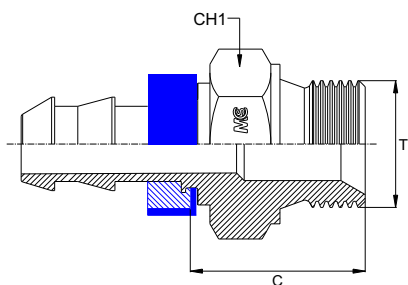
Bar W.P.	Codice Part Number	Filetto Thread	Ø Int. Tubo Inch. Hose I.D.	C Cut - Off	CH1
18	JM0704Uni	7/16"	1/4"	26,0	14
	JM0804Uni	1/2"	1/4"	27,0	14
	JM0906Uni	9/16"	3/8"	24,8	17
	JM1206Uni	3/4"	3/8"	27,0	22
15	JM1208Uni	3/4"	1/2"	26,0	22
	JM1712Uni	1" 1/16	3/4"	35,0	27
12	JM2116Uni	1" 5/16	1"	38,5	36

FEMMINA METRICA TUBOLARE - SERIE LEGGERA - *Unilock*
METRIC STANDPIPE - LIGHT TYPE - *Unilock*
- BEL -



Bar W.P.	Codice Part Number	T Ø Tubo Ø Tube	Ø Int. Tubo Inch. Hose I.D.	C Cut - Off
18	SL0604 <i>Uni</i>	06 L	1/4"	28,0
	SL0804 <i>Uni</i>	08 L	1/4"	28,0
	SL1004 <i>Uni</i>	10 L	1/4"	28,0
	SL1006 <i>Uni</i>	10 L	3/8"	28,5
	SL1206 <i>Uni</i>	12 L	3/8"	28,5
15	SL1508 <i>Uni</i>	15 L	1/2"	29,0
	SL1808 <i>Uni</i>	18 L	1/2"	29,0
	SL2212 <i>Uni</i>	22 L	3/4"	31,5
12	SL2816 <i>Uni</i>	28 L	1"	34,5

MASCHIO BSP SVASATO A 60° - *Unilock*
BSP MALE PARALLEL 60° CONE - *Unilock*
- AGR -



Bar W.P.	Codice Part Number	Filetto Thread	Ø Int. Tubo Inch. Hose I.D.	C Cut - Off	CH1
18	BSPM0404 <i>Uni</i>	1/4"	1/4"	25,5	19
	BSPM0606 <i>Uni</i>	3/8"	3/8"	25,5	22
15	BSPM0808 <i>Uni</i>	1/2"	1/2"	28,5	27
	BSPM1212 <i>Uni</i>	3/4"	3/4"	32,0	32
12	BSPM1616 <i>Uni</i>	1"	1"	36,0	38

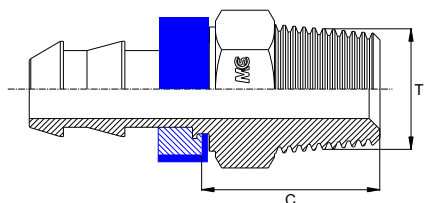
MASCHIO SVASATO 60° - Unilock

Filetto NPT

MALE 60° CONE - Unilock

Thread NPT

- AGN -



Bar W.P.	Codice Part Number	Filetto Thread	Ø Int. Tubo Inch. Hose I.D.	C Cut - Off	CH1
18	NPTM0404Uni	1/4"	1/4"	26,0	14
	NPTM0606Uni	3/8"	3/8"	26,0	19
15	NPTM0808Uni	1/2"	1/2"	30,5	22
	NPTM1212Uni	3/4"	3/4"	32,0	27
12	NPTM1616Uni	1"	1"	39,0	36

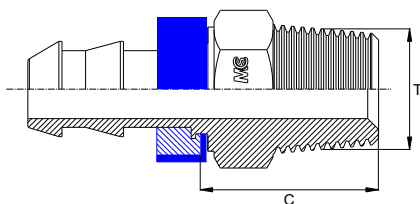
MASCHIO SVASATO 60° - Unilock

Filetto Gas Conico

MALE 60° CONE - Unilock

Thread BSP Taper

- AGR-K-



Bar W.P.	Codice Part Number	Filetto Thread	Ø Int. Tubo Inch. Hose I.D.	C Cut - Off	CH1
18	BSPTM0404Uni	1/4"	1/4"	25,5	14
	BSPTM0606Uni	3/8"	3/8"	26,0	19
15	BSPTM0808Uni	1/2"	1/2"	28,5	22
	BSPTM1212Uni	3/4"	3/4"	32,0	27
12	BSPTM1616Uni	1"	1"	39,0	36

TUBO CONSIGLIATO SUI RACCORDI *UniLock*
RECOMMENDED HOSE FOR *UniLock* FITTINGS



TFS0006 **Hypress *UniLock***

SL06

Applicazioni / Applications :



ATTENZIONE: Con raccordi della serie UniLock, non utilizzare per impianti frenanti ad aria compressa ed in circuiti sottoposti a forti impulsi di pressione.

ATTENTION: With UniLock fittings, do not use for brake plants with compressed air or in circuits under strong pressure impulses.

Tubo interno: Gomma sintetica resistente agli olii.
Internal hose: Oil resistant synthetic rubber.

Rinforzo: 1 treccia tessile.
Reinforcement: 1 textile braid.

Copertura esterna: Gomma sintetica resistente agli olii, carburanti ed agenti atmosferici.
External covering: Synthetic rubber, resistant to oils, fuels and atmospheric conditions.



Specifiche applicabili / Applicable specs. :
 SAE 100 R6 EN 854 1TE

Fluidi raccomandati:
 Fluidi idraulici derivati dal petrolio, emulsioni acquaglicole, lubrificanti.
Recommended fluid:
 Hydraulic fluid petroleum based, glycol water based, lubricant.
Temperatura di esercizio:
 da 40 a +100°C continuo
 +70° per fluidi acquosi
Operating temperature range:
 from 40 to +100°C continuous
 +70°C for water based fluids

Easy line

part number	ID		size	OD	Max WP Std fitting		Max WP UniLock		Min BR		Weight (approx)		Ferrule Code
	in	mm			bar	psi	bar	psi	mm	inch	Kg/m	lb/ft	
	○ TFS0006-03	3/16"	4,8	03	10,7	34	493	-	-	50	1,969	0,099	0,067
○ TFS0006-04	1/4"	6,4	04	12,3	28	406	18	261	65	2,559	0,100	0,067	FR704
○ TFS0006-05	5/16"	8,0	05	13,9	28	406	* on request		80	3,150	0,125	0,084	FR705
○ TFS0006-06	3/8"	9,5	06	15,5	28	406	18	261	80	3,150	0,150	0,101	FR706
○ TFS0006-08	1/2"	12,7	08	19,0	28	406	15	218	100	3,937	0,200	0,134	FR708
○ TFS0006-10	5/8"	16,0	10	22,6	24	348	-	-	125	4,921	0,250	0,168	FR710
○ TFS0006-12	3/4"	19,0	12	25,8	21	305	15	218	150	5,906	0,300	0,202	FR712
○ TFS0006-16	1 "	25,4	16	33,2	9	131	12	174	170	6,693	0,450	0,302	FR716 **

** not included in SAE standard

fattore di sicurezza 4:1
 safety factor 4:1

Marcatura / Marking : Disponibile solo con marcatura inkjet bianca (non sono possibili personalizzazioni)
 White ink branded (customization not possible)

Hypress UniLock - EN 854 1TE/SAE 100R6 - Ø 1/4" - DN6 - WP 28 bar / 400 psi



Facile assemblaggio – non sono necessari attrezzi o fascette
 Easy assembly – no tools or clamps required

Serie Raccordi
Fittings series

