



ABN 27 117 521 598

*The Direct Connection*

**Mark Heffernan** Qld Pty Ltd

The Australian distributor of  
Low pressure fittings Unilock series

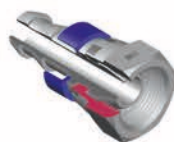


INDICE  
INDEX

Pag. 10.01

ISTRUZIONI DI MONTAGGIO  
ASSEMBLY INSTRUCTIONS

Pag. 10.02



FEMMINA GIR. GAS CONO 60° UNILOCK  
BSP SWIVEL FEM. 60° CONE UNILOCK

Cod. BSPSF..UNI

Pag. 10.03



FEMM. GIR.90°GAS CONO 60° UNILOCK  
90° BSP SWIVEL FEM.60°CONE UNILOCK

Cod. 90BSPSF..UNI

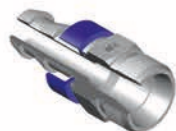
Pag. 10.03



FEMM.GIR. 24° SERIE LEGG. UNILOCK  
METR.SWIVEL FEM. 24°CONE UNILOCK

Cod. ORMSFL..UNI

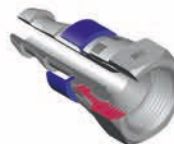
Pag. 10.04



MASCHIO METR.24° SER.LEG.UNILOCK  
METRIC MALE 24°CONE UNILOCK

Cod. MML..UNI

Pag. 10.04



FEMM.GIR.JIC SV.74° UNILOCK  
JIC SWIVEL FEMALE 74° CONE UNILOCK

Cod. JSF..UNI

Pag. 10.05



MASCHIO JIC CONO 74° UNILOCK  
JIC MALE 74° CONE UNILOCK

Cod. JM..UNI

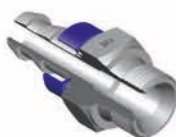
Pag. 10.05



FEMM.METR.TUB.SER.LEGG.UNILOCK  
METRIC STAND. LIGHT TYPE UNILOCK

Cod. SL..UNI

Pag. 10.06



MASCHIO GAS SV.60° UNILOCK  
BSP MALE 60° CONE UNILOCK

Cod. BSPM..UNI

Pag. 10.06



MASCHIO SV.60° - NPT UNILOCK  
MALE 60° CONE - NPT UNILOCK

Cod. NPTM..UNI

Pag. 10.07



MASCHIO SV.60° GAS-CON. UNILOCK  
MALE 60°CONE BSP-TAPER UNILOCK

Cod. BSPTM..UNI

Pag. 10.07



TUBO CONSIGLIATO SU RACCORDI  
UNILOCK  
RECOMMENDED HOSE FOR UNILOCK  
FITTINGS

Cod. TFS0006..

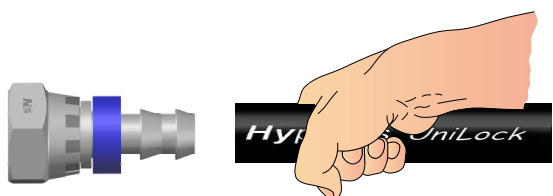
Pag. 10.08

# - ISTRUZIONI DI MONTAGGIO - - ASSEMBLY INSTRUCTIONS -

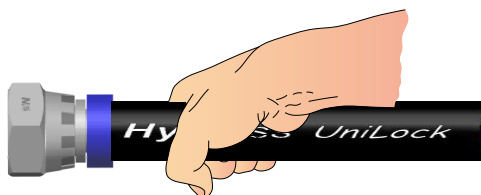


1. Tagliare il tubo a 90° alla lunghezza desiderata usando un taglierino.

1. Cut the hose squarely to desired length, using a cutter.



2. Appoggiare su di una superficie piana l'estremità del raccordo e, impugnando il tubo a circa due centimetri dall'estremità spingere fino a coprire con il collarino di plastica blu tutta l'estremità del tubo.



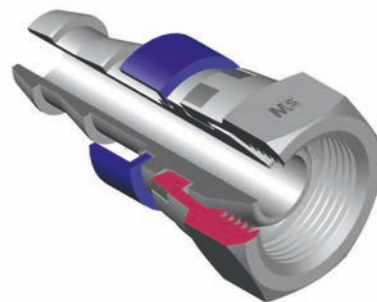
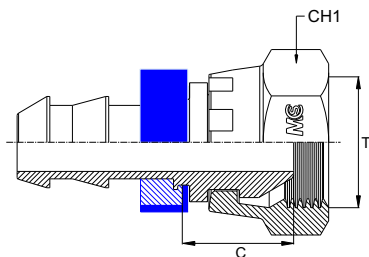
2. Place the fitting end on a flat surface, hold the hose at about 2 cm from its extremity and push it until the hose end will be fully covered by the blue plastic ring.



3. N.B. I raccordi Unilock possono essere utilizzati solo dopo l'inserimento completo del tubo fino al collarino di plastica blu.

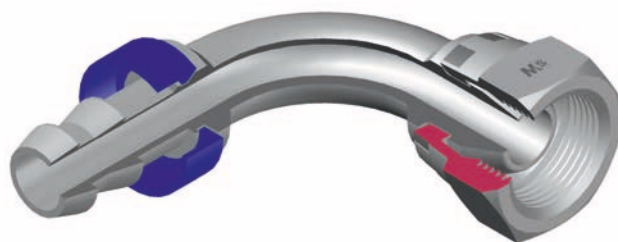
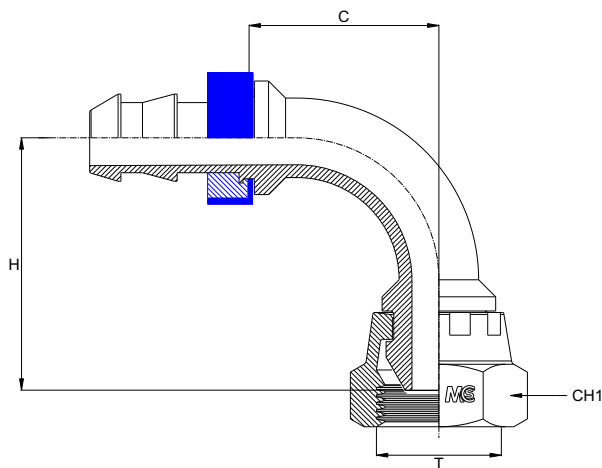
3. Warning: unilock fittings can only be used if the hose has been fully inserted up to the blue ring.

**FEMMINA GIREVOLE GAS CONO 60° - *Unilock***  
**BSP SWIVEL FEMALE 60° CONE - *Unilock***  
**- DKR -**



Bar W.P.	Codice Part Number	Filetto Thread	Ø Int. Tubo Inch. Hose I.D.	C Cut - Off	CH1
18	BSPSF0404 <i>Uni</i>	1/4"	1/4"	15,5	19
	BSPSF0606 <i>Uni</i>	3/8"	3/8"	15,5	22
15	BSPSF0808 <i>Uni</i>	1/2"	1/2"	19,0	27
	BSPSF1212 <i>Uni</i>	3/4"	3/4"	20,5	32
12	BSPSF1616 <i>Uni</i>	1"	1"	21,5	38

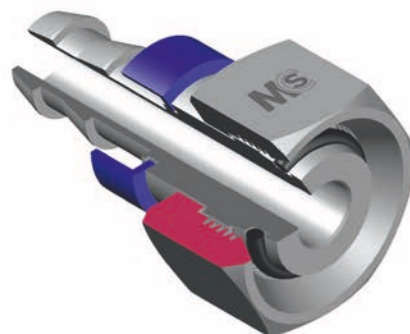
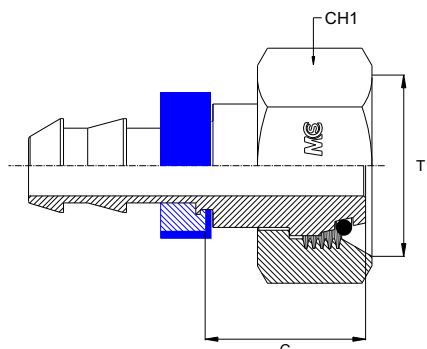
**FEMMINA GIREVOLE A 90° GAS CONO 60° - *Unilock***  
**90° BSP SWIVEL FEMALE 60° CONE - *Unilock***  
**- DKR 90° -**



Bar W.P.	Codice Part Number	Filetto Thread	Ø Int. Tubo Inch. Hose I.D.	C Cut - Off	H Drop	CH1
18	90BSPSF0404 <i>Uni</i>	1/4"	1/4"	22,0	27,5	19
	90BSPSF0606 <i>Uni</i>	3/8"	3/8"	31,0	36,5	22
15	90BSPSF0808 <i>Uni</i>	1/2"	1/2"	33,5	44,5	27
	90BSPSF1212 <i>Uni</i>	3/4"	3/4"	48,0	59,0	32
12	90BSPSF1616 <i>Uni</i>	1"	1"	62,0	74,5	38

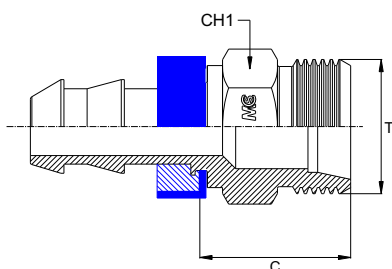
\* Per misure non presenti si prega di contattare il nostro ufficio commerciale.  
 \* Other sizes available on request.

**FEMMINA GIR. O'RING FIL. METRICO CONO 24° - SERIE LEGGERA - *Unilock***  
**O'RING METRIC SWIVEL FEMALE 24° CONE - LIGHT TYPE - *Unilock***  
**- DKOL -**



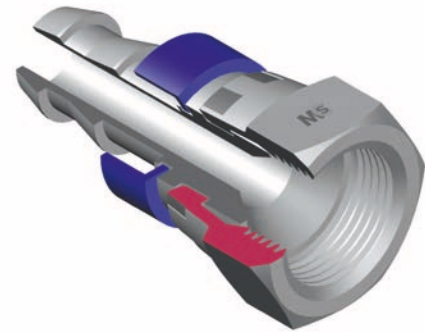
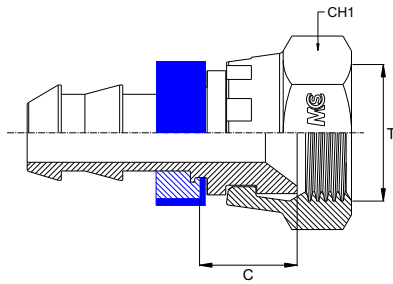
Bar W.P.	Codice Part Number	Filetto Thread	Ø Int. Tubo Inch. Hose I.D.	DIN 24°	C Cut - Off	CH1
18	ORMSFL0604 <i>Uni</i>	12x1,5	1/4"	06L	20,5	14
	ORMSFL0804 <i>Uni</i>	14x1,5	1/4"	08L	21,5	17
	ORMSFL1004 <i>Uni</i>	16x1,5	1/4"	10L	24,5	19
	ORMSFL1006 <i>Uni</i>	16x1,5	3/8"	10L	22,5	19
	ORMSFL1206 <i>Uni</i>	18x1,5	3/8"	12L	22,5	22
15	ORMSFL1508 <i>Uni</i>	22x1,5	1/2"	15L	23,0	27
	ORMSFL1808 <i>Uni</i>	26x1,5	1/2"	18L	28,0	32
	ORMSFL2212 <i>Uni</i>	30x2	3/4"	22L	31,5	36
12	ORMSFL2816 <i>Uni</i>	36x2	1"	28L	31,5	41

**MASCHIO METRICO SVASATO 24° - SERIE LEGGERA - *Unilock***  
**METRIC MALE 24° CONE - LIGHT TYPE - *Unilock***  
**- CEL -**



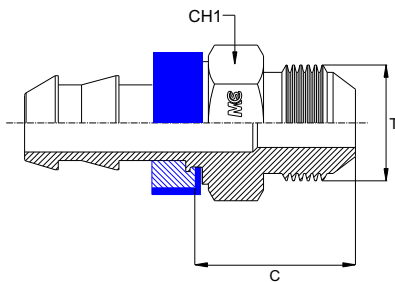
Bar W.P.	Codice Part Number	Filetto Thread	Ø Int. Tubo Inch. Hose I.D.	DIN 24°	C Cut - Off	CH1
18	MML0604 <i>Uni</i>	12x1,5	1/4"	06L	23,5	14
	MML0804 <i>Uni</i>	14x1,5	1/4"	08L	23,5	14
	MML1004 <i>Uni</i>	16x1,5	1/4"	10L	25,5	17
	MML1006 <i>Uni</i>	16x1,5	3/8"	10L	23,5	17
	MML1206 <i>Uni</i>	18x1,5	3/8"	12L	23,5	19
15	MML1508 <i>Uni</i>	22x1,5	1/2"	15L	24,5	22
	MML1808 <i>Uni</i>	26x1,5	1/2"	18L	27,0	27
	MML2212 <i>Uni</i>	30x2	3/4"	22L	28,0	30
12	MML2816 <i>Uni</i>	36x2	1"	28L	30,0	36

**FEMMINA GIREVOLE JIC SVASATA 74° - *Unilock***  
**JIC SWIVEL FEMALE 74° CONE - *Unilock***  
**- DKJ -**



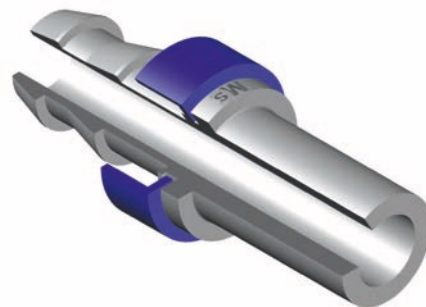
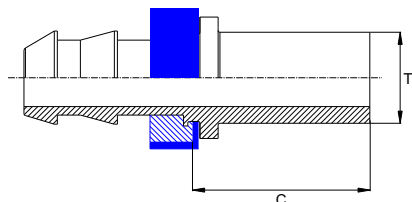
Bar W.P.	Codice Part Number	Filetto Thread	Ø Int. Tubo Inch. Hose I.D.	C Cut - Off	CH1
18	JSF0704Uni	7/16"	1/4"	14,0	17
	JSF0804Uni	1/2"	1/4"	14,0	17
	JSF0906Uni	9/16"	3/8"	12,0	19
	JSF1206Uni	3/4"	3/8"	15,5	24
15	JSF1208Uni	3/4"	1/2"	15,5	24
	JSF1712Uni	1" 1/16	3/4"	18,5	32
12	JSF2116Uni	1" 5/16	1"	19,0	38

**MASCHIO JIC CONO 74° - *Unilock***  
**JIC MALE 74° CONE - *Unilock***  
**- AGJ -**



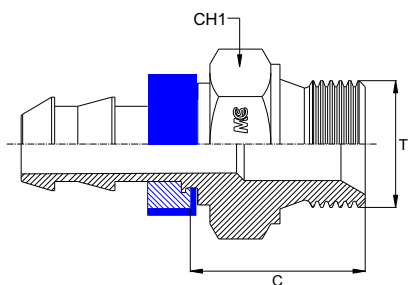
Bar W.P.	Codice Part Number	Filetto Thread	Ø Int. Tubo Inch. Hose I.D.	C Cut - Off	CH1
18	JM0704Uni	7/16"	1/4"	26,0	14
	JM0804Uni	1/2"	1/4"	27,0	14
	JM0906Uni	9/16"	3/8"	24,8	17
	JM1206Uni	3/4"	3/8"	27,0	22
15	JM1208Uni	3/4"	1/2"	26,0	22
	JM1712Uni	1" 1/16	3/4"	35,0	27
12	JM2116Uni	1" 5/16	1"	38,5	36

**FEMMINA METRICA TUBOLARE - SERIE LEGGERA - *Unilock***  
**METRIC STANDPIPE - LIGHT TYPE - *Unilock***  
**- BEL -**



Bar W.P.	Codice Part Number	T Ø Tubo Ø Tube	Ø Int. Tubo Inch. Hose I.D.	C Cut - Off
18	SL0604Uni	06 L	1/4"	28,0
	SL0804Uni	08 L	1/4"	28,0
	SL1004Uni	10 L	1/4"	28,0
	SL1006Uni	10 L	3/8"	28,5
	SL1206Uni	12 L	3/8"	28,5
15	SL1508Uni	15 L	1/2"	29,0
	SL1808Uni	18 L	1/2"	29,0
	SL2212Uni	22 L	3/4"	31,5
12	SL2816Uni	28 L	1"	34,5

**MASCHIO BSP SVASATO A 60° - *Unilock***  
**BSP MALE PARALLEL 60° CONE - *Unilock***  
**- AGR -**



Bar W.P.	Codice Part Number	Filetto Thread	Ø Int. Tubo Inch. Hose I.D.	C Cut - Off	CH1
18	BSPM0404Uni	1/4"	1/4"	25,5	19
	BSPM0606Uni	3/8"	3/8"	25,5	22
15	BSPM0808Uni	1/2"	1/2"	28,5	27
	BSPM1212Uni	3/4"	3/4"	32,0	32
12	BSPM1616Uni	1"	1"	36,0	38



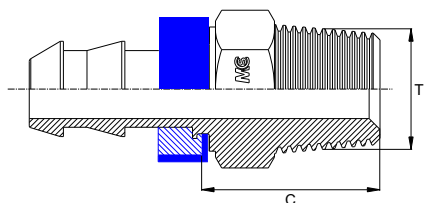
**MASCHIO SVASATO 60° - Unilock**

Filetto NPT

**MALE 60° CONE - Unilock**

Thread NPT

- AGN -



Bar W.P.	Codice Part Number	Filetto Thread	Ø Int. Tubo Inch. Hose I.D.	C Cut - Off	CH1
18	NPTM0404Uni	1/4"	1/4"	26,0	14
	NPTM0606Uni	3/8"	3/8"	26,0	19
15	NPTM0808Uni	1/2"	1/2"	30,5	22
	NPTM1212Uni	3/4"	3/4"	32,0	27
12	NPTM1616Uni	1"	1"	39,0	36

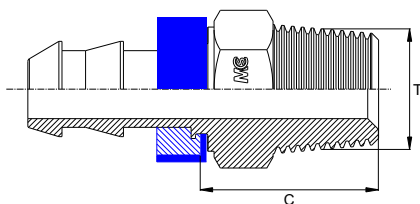
**MASCHIO SVASATO 60° - Unilock**

Filetto Gas Conico

**MALE 60° CONE - Unilock**

Thread BSP Taper

- AGR-K-



Bar W.P.	Codice Part Number	Filetto Thread	Ø Int. Tubo Inch. Hose I.D.	C Cut - Off	CH1
18	BSPTM0404Uni	1/4"	1/4"	25,5	14
	BSPTM0606Uni	3/8"	3/8"	26,0	19
15	BSPTM0808Uni	1/2"	1/2"	28,5	22
	BSPTM1212Uni	3/4"	3/4"	32,0	27
12	BSPTM1616Uni	1"	1"	39,0	36



**TUBO CONSIGLIATO SUI RACCORDI *UniLock***  
**RECOMMENDED HOSE FOR *UniLock* FITTINGS**



TFS0006 **Hypress *UniLock***

SL06

**Applicazioni / Applications :**



**ATTENZIONE:** Con raccordi della serie UniLock, non utilizzare per impianti frenanti ad aria compressa ed in circuiti sottoposti a forti impulsi di pressione.

**ATTENTION:** With UniLock fittings, do not use for brake plants with compressed air or in circuits under strong pressure impulses.

**Tubo interno:** Gomma sintetica resistente agli olii.  
**Internal hose:** Oil resistant synthetic rubber.

**Rinforzo:** 1 treccia tessile.  
**Reinforcement:** 1 textile braid.

**Copertura esterna:** Gomma sintetica resistente agli olii, carburanti ed agenti atmosferici.  
**External covering:** Synthetic rubber, resistant to oils, fuels and atmospheric conditions.



**Specifiche applicabili / Applicable specs. :**  
 SAE 100 R6 EN 854 1TE

**Fluidi raccomandati:**  
 Fluidi idraulici derivati dal petrolio, emulsioni acquaglicole, lubrificanti.  
**Recommended fluid:**  
 Hydraulic fluid petroleum based, glycol water based, lubricant.  
**Temperatura di esercizio:**  
 da 40 a +100°C continuo  
 +70° per fluidi acquosi  
**Operating temperature range:**  
 from 40 to +100°C continuous  
 +70°C for water based fluids

**Easy line**

part number	ID		size	OD	Max WP Std fitting		Max WP UniLock		Min BR		Weight (approx)		Ferrule Code
	in	mm			bar	psi	bar	psi	mm	inch	Kg/m	lb/ft	
	○ TFS0006-03	3/16"	4,8	03	10,7	34	493	-	-	50	1,969	0,099	0,067
○ TFS0006-04	1/4"	6,4	04	12,3	28	406	18	261	65	2,559	0,100	0,067	FR704
○ TFS0006-05	5/16"	8,0	05	13,9	28	406	* on request		80	3,150	0,125	0,084	FR705
○ TFS0006-06	3/8"	9,5	06	15,5	28	406	18	261	80	3,150	0,150	0,101	FR706
○ TFS0006-08	1/2"	12,7	08	19,0	28	406	15	218	100	3,937	0,200	0,134	FR708
○ TFS0006-10	5/8"	16,0	10	22,6	24	348	-	-	125	4,921	0,250	0,168	FR710
○ TFS0006-12	3/4"	19,0	12	25,8	21	305	15	218	150	5,906	0,300	0,202	FR712
○ TFS0006-16	1 "	25,4	16	33,2	9	131	12	174	170	6,693	0,450	0,302	FR716 **

\*\* not included in SAE standard

fattore di sicurezza 4:1  
 safety factor 4:1

**Marcatura / Marking :** Disponibile solo con marcatura inkjet bianca (non sono possibili personalizzazioni)  
 White ink branded (customization not possible)

**Hypress UniLock - EN 854 1TE/SAE 100R6 - Ø 1/4" - DN6 - WP 28 bar / 400 psi**



Facile assemblaggio – non sono necessari attrezzi o fascette  
 Easy assembly – no tools or clamps required

**Serie Raccordi**  
**Fittings series**

